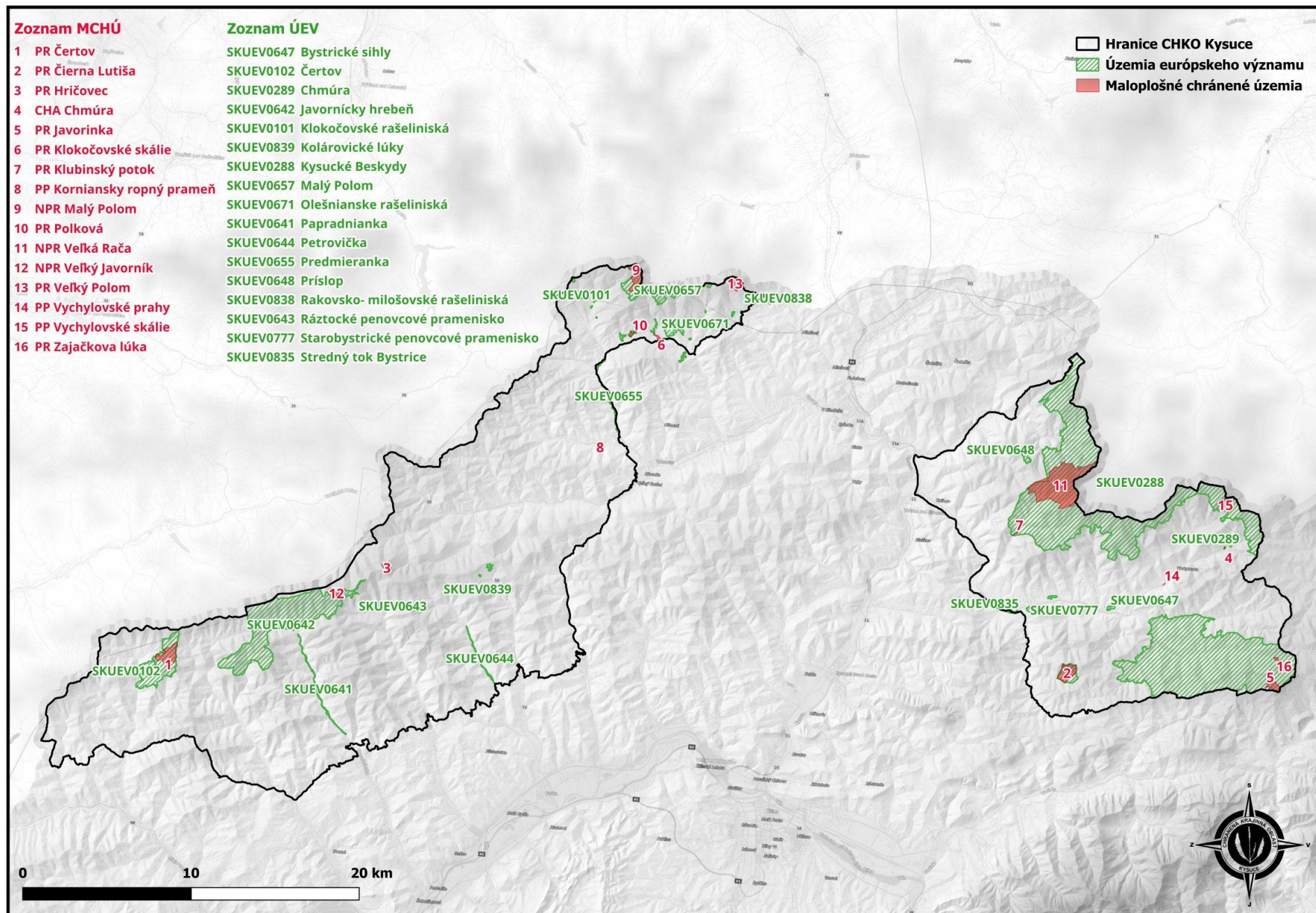


## Príloha 6.1. Mapa chráneného územia



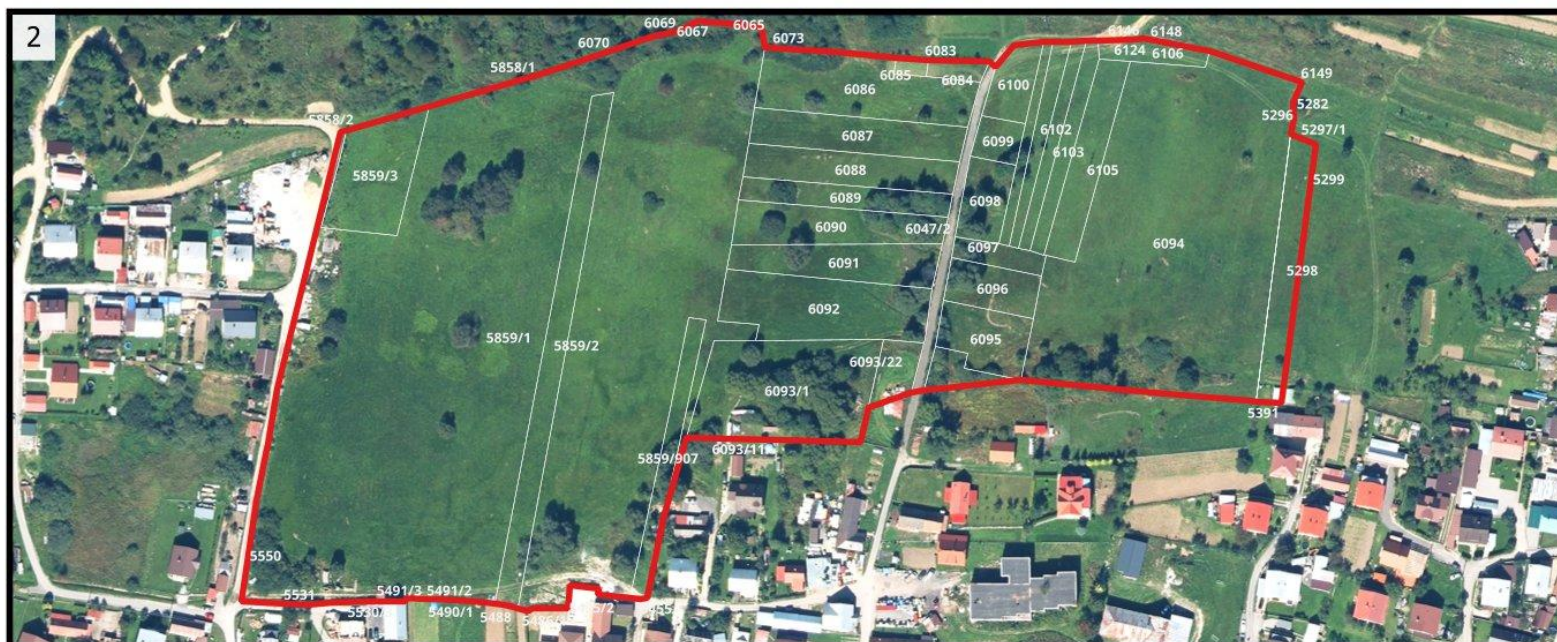
# Príloha 6.1.1 Mapy území európskeho významu siete Natura 2000

## 1. SKUEV0647 Bystrické síhly

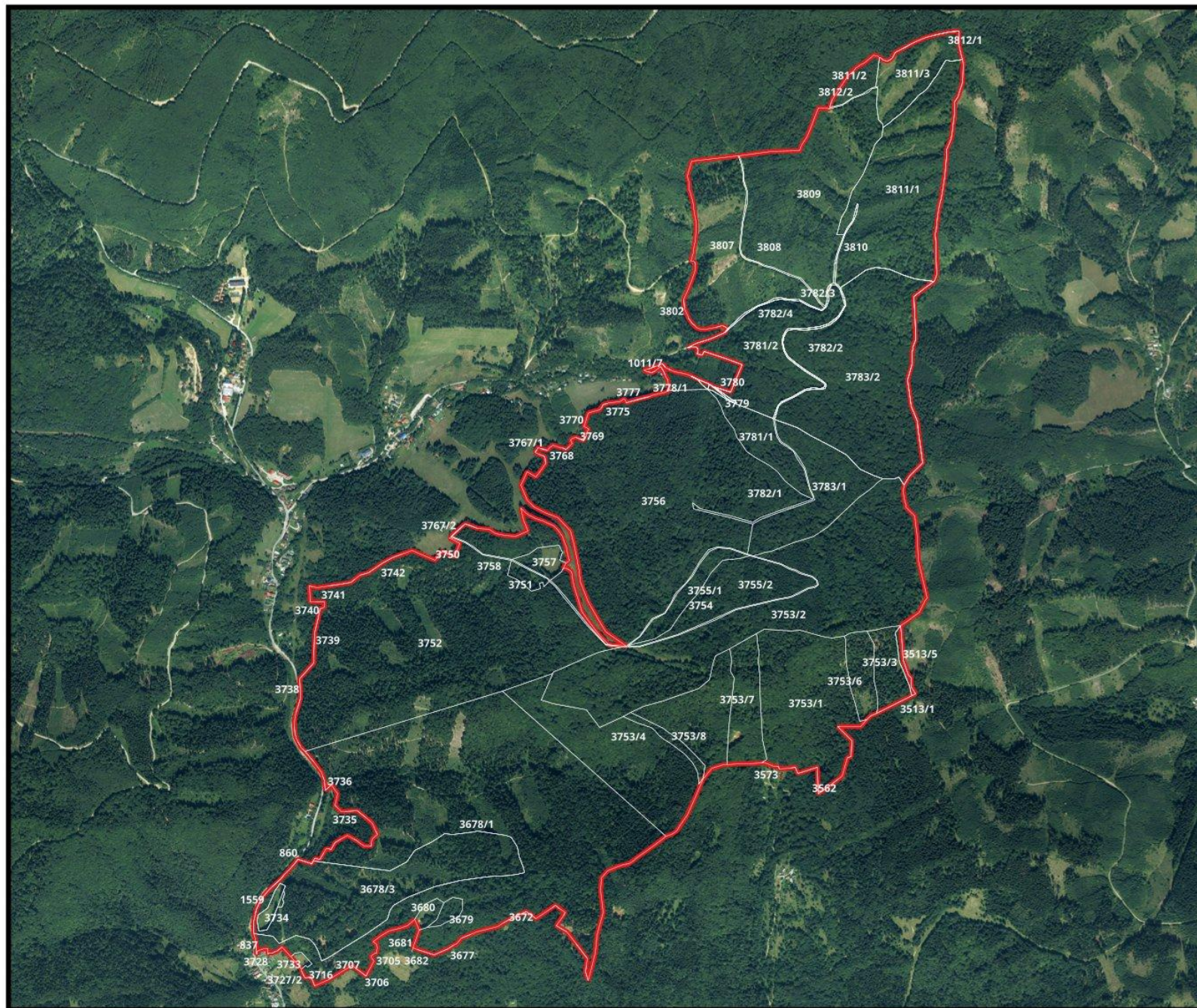


**Legenda**

- Hranice lokality
- KN C Stará Bystrica
- KN C Nová Bystrica



## 2. SKUEV0102 Čertov

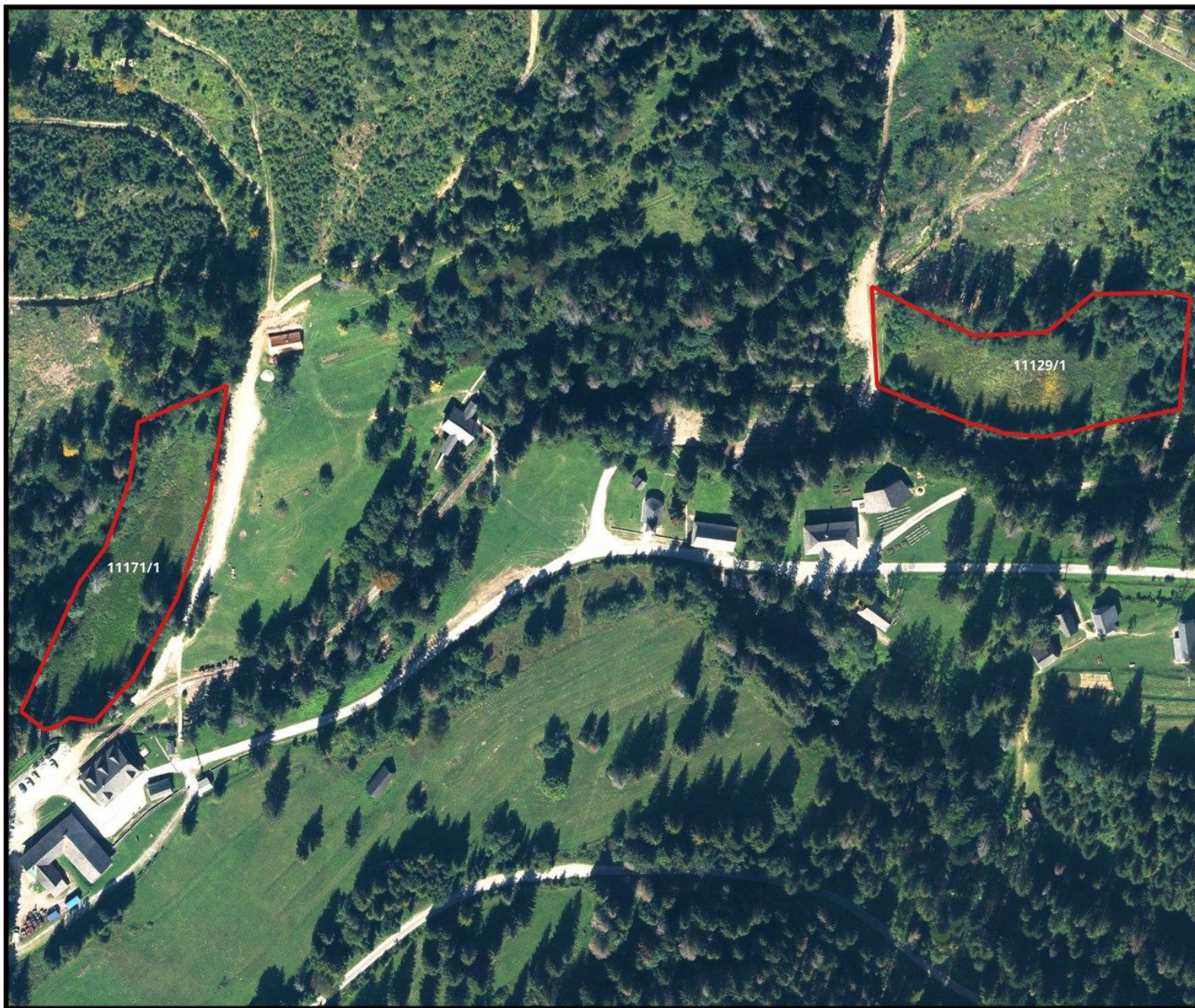


### Legenda


- KN C Lazy pod Makytou
- Hranice lokality



### 3. SKUEV0289 Chmúra



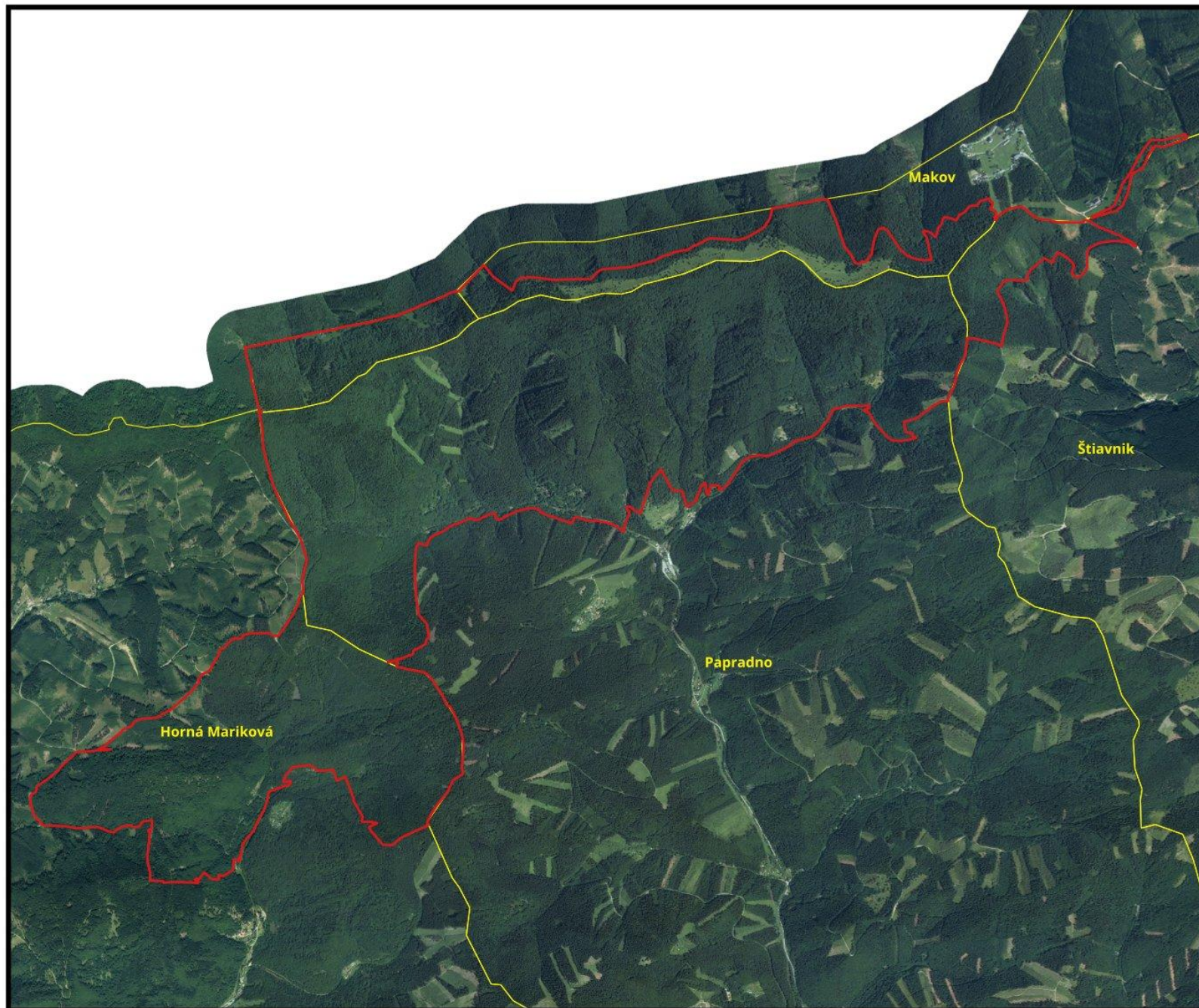
#### Legenda

-  Hranice lokality
-  KN C Nová Bystrica



0 40 80 m

#### 4a. SKUEV0642 Javornický hrebeň

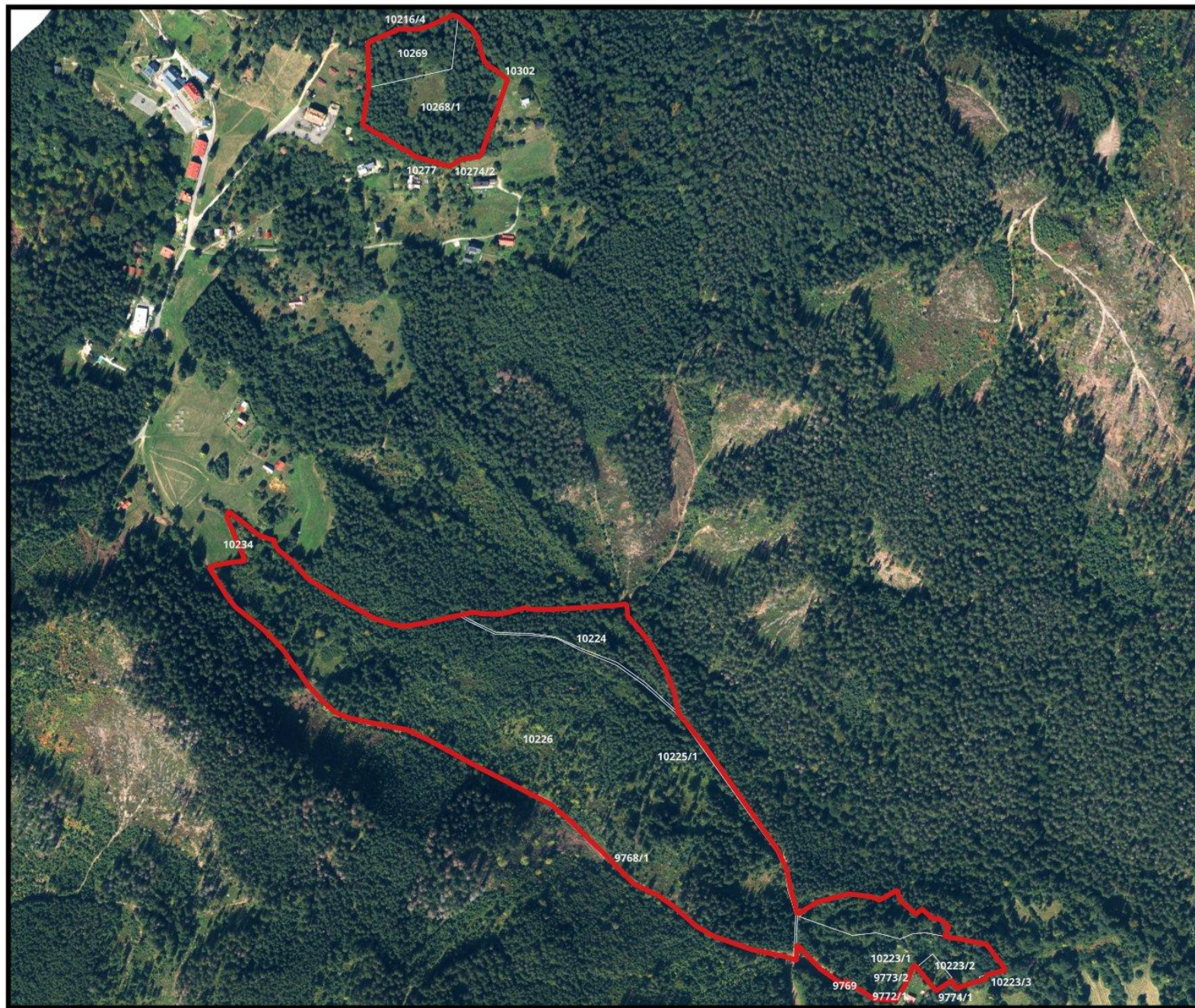


Legenda

-  Hranice lokality
-  Hranice KÚ



# 5a. SKUEV0101 Klokočovské rašeliniská 1

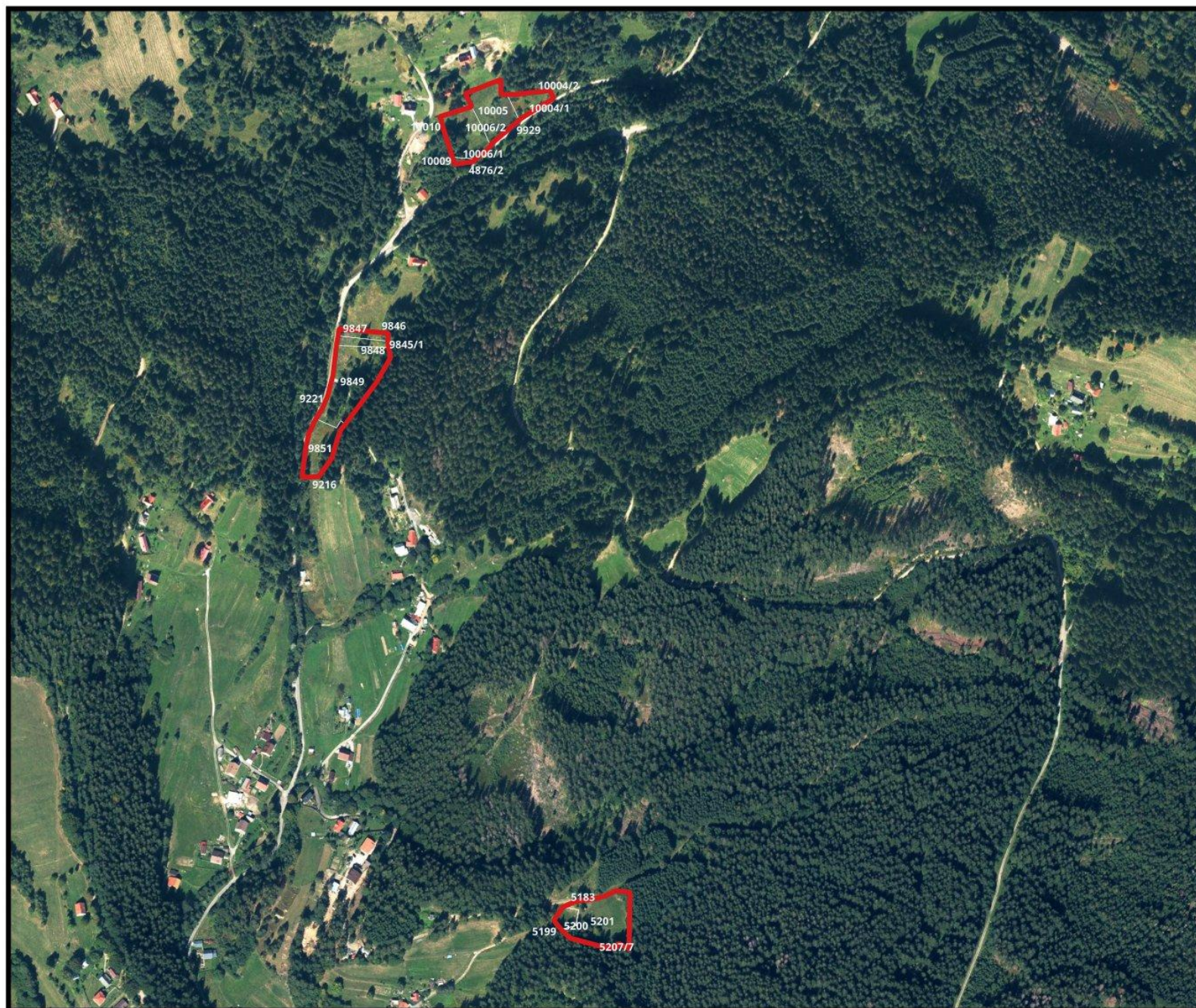


**Legenda**


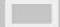
- Hranice lokality [1]
- KN C Klokočov



## 5b. SKUEV0101 Klokočovské rašeliniská 2

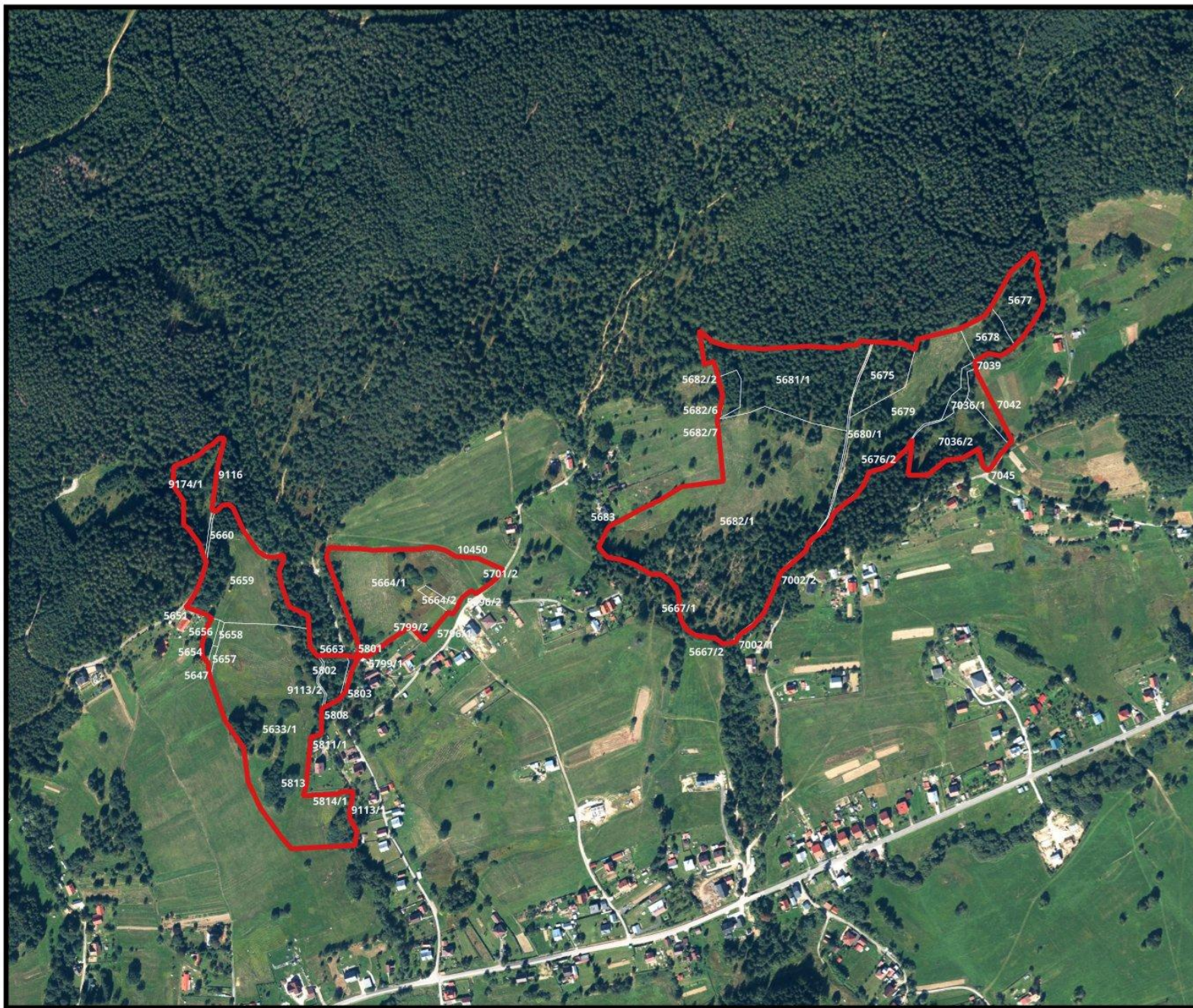


### Legenda

-  Hranice lokality [2]
-  KN C Klokočov

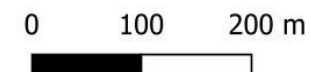


### 5c. SKUEV0101 Klokočovské rašeliniská 3

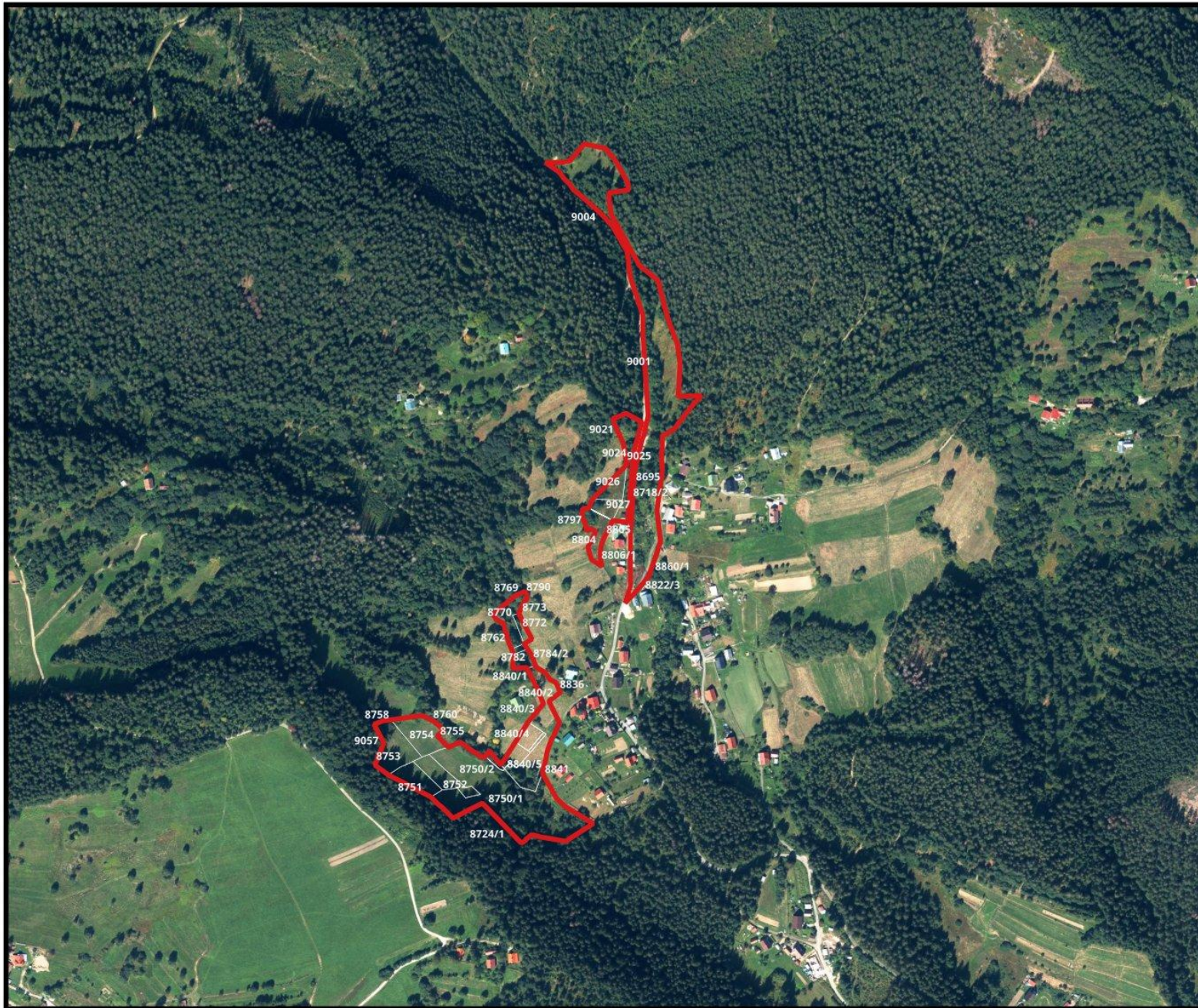


**Legenda**



- Hranice lokality [3]
- KN C Klokočov



## 5d. SKUEV0101 Klokočovské rašeliniská 4

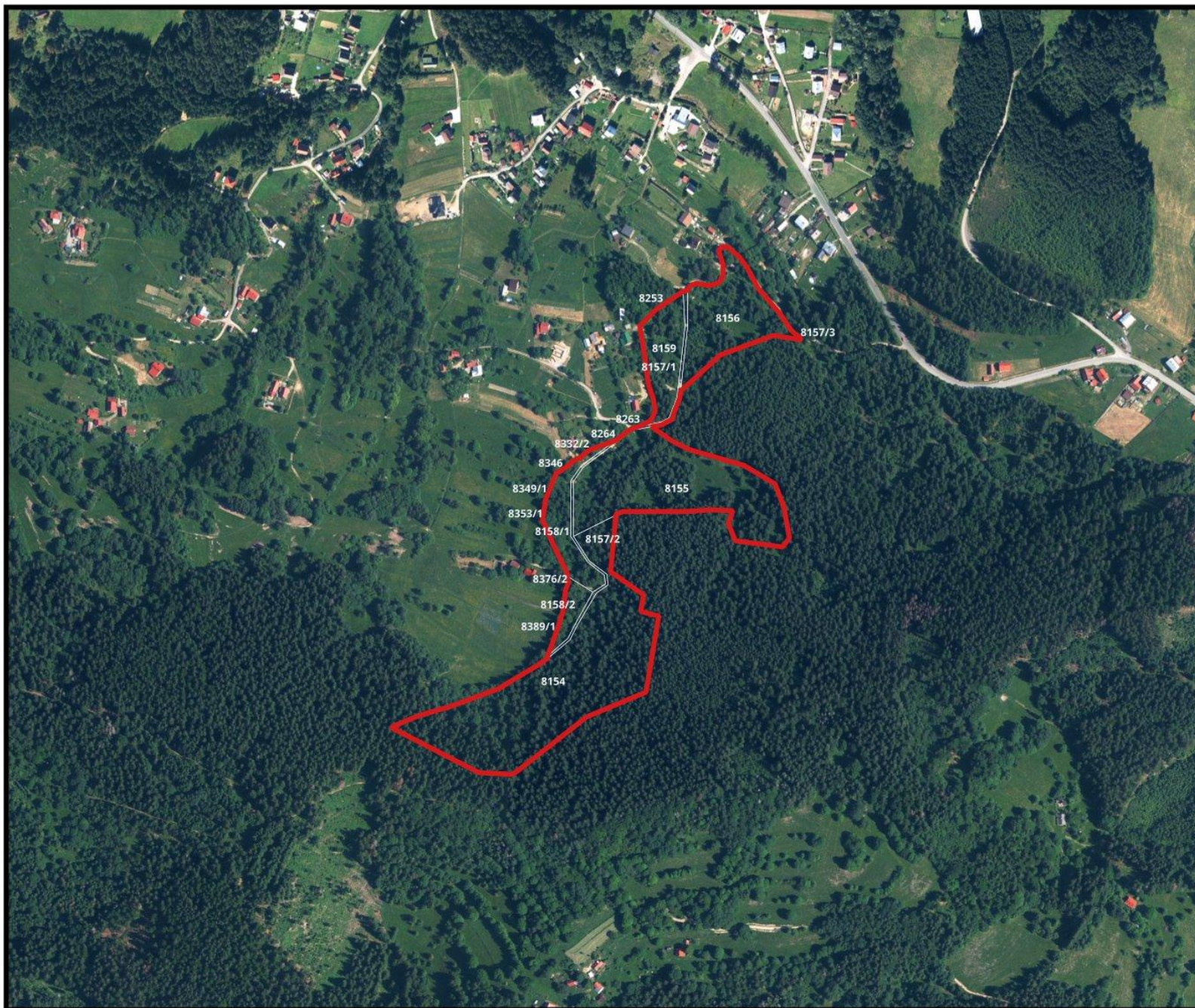


### Legenda



-  Hranice lokality [4]
-  KN C Klokočov

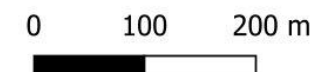


## 5e. SKUEV0101 Klokočovské rašeliniská 5

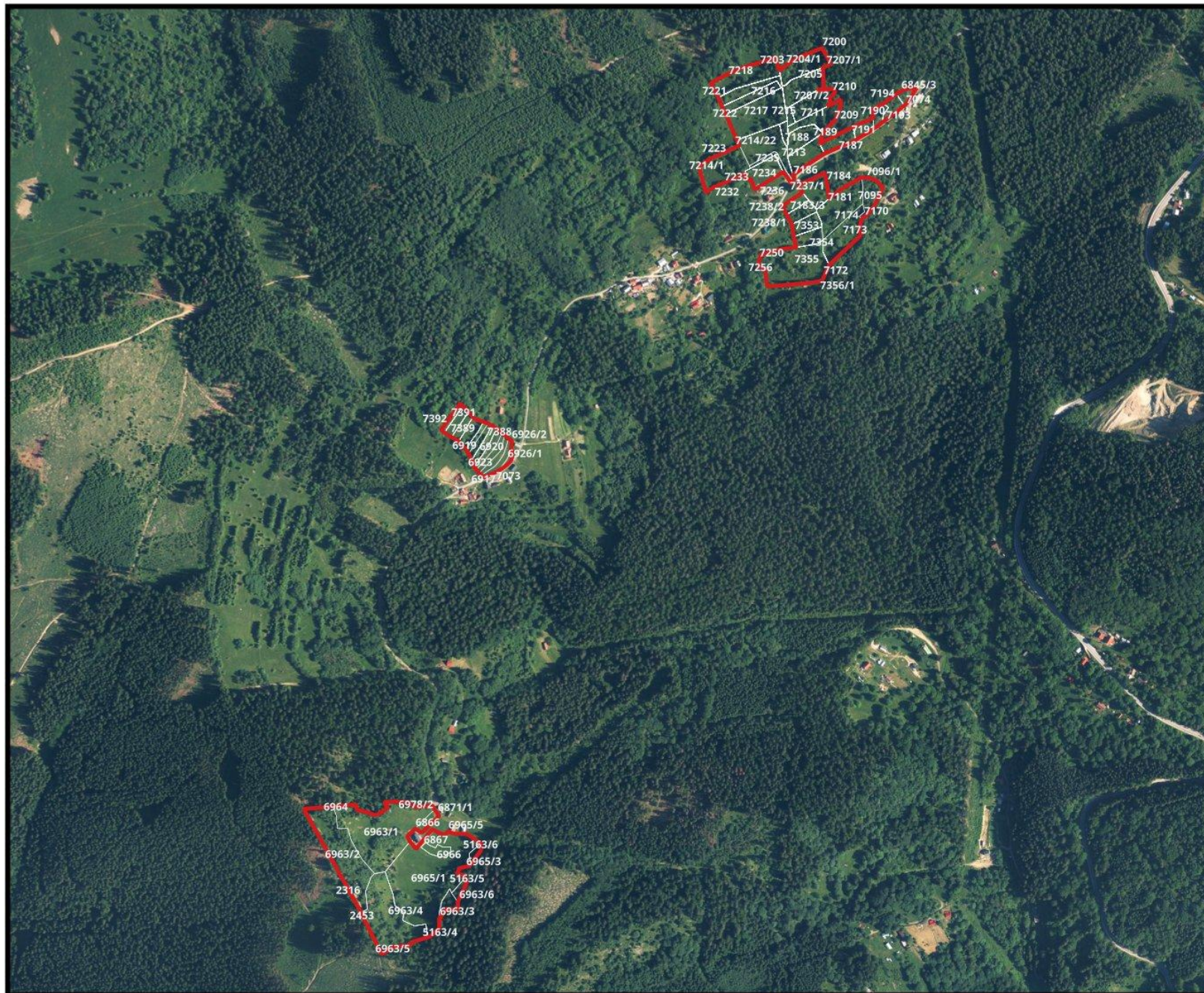


### Legenda

-  Hranice lokality [5]
-  KN C Klokočov

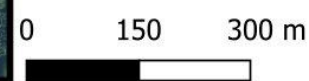


## 6. SKUEV0839 Kolárovice lúky

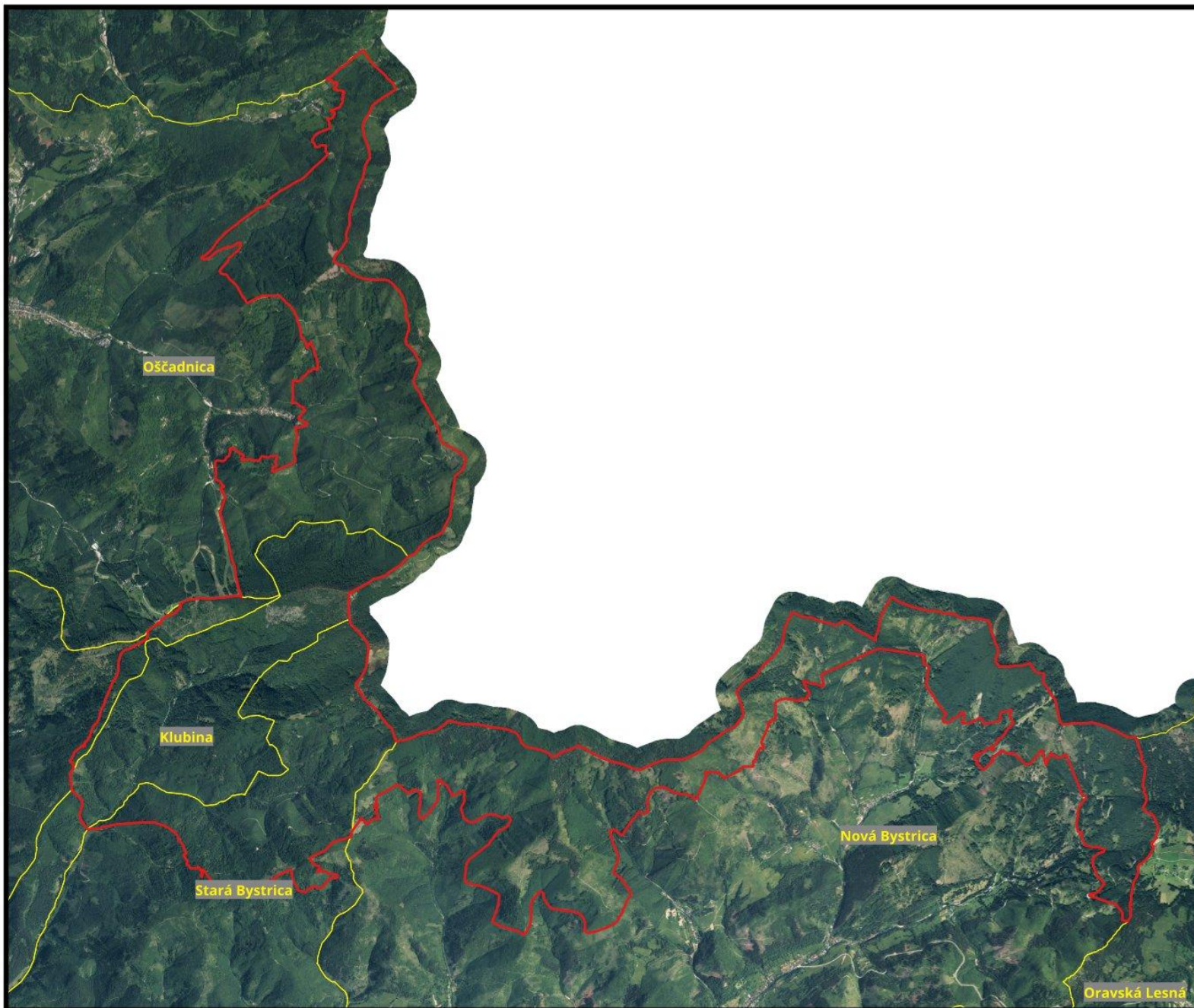


**Legenda**

- Hranice lokality
- KN C Kolárovice

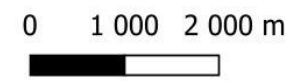


# 7a. SKUEV0288 Kysucké Beskydy, západná časť

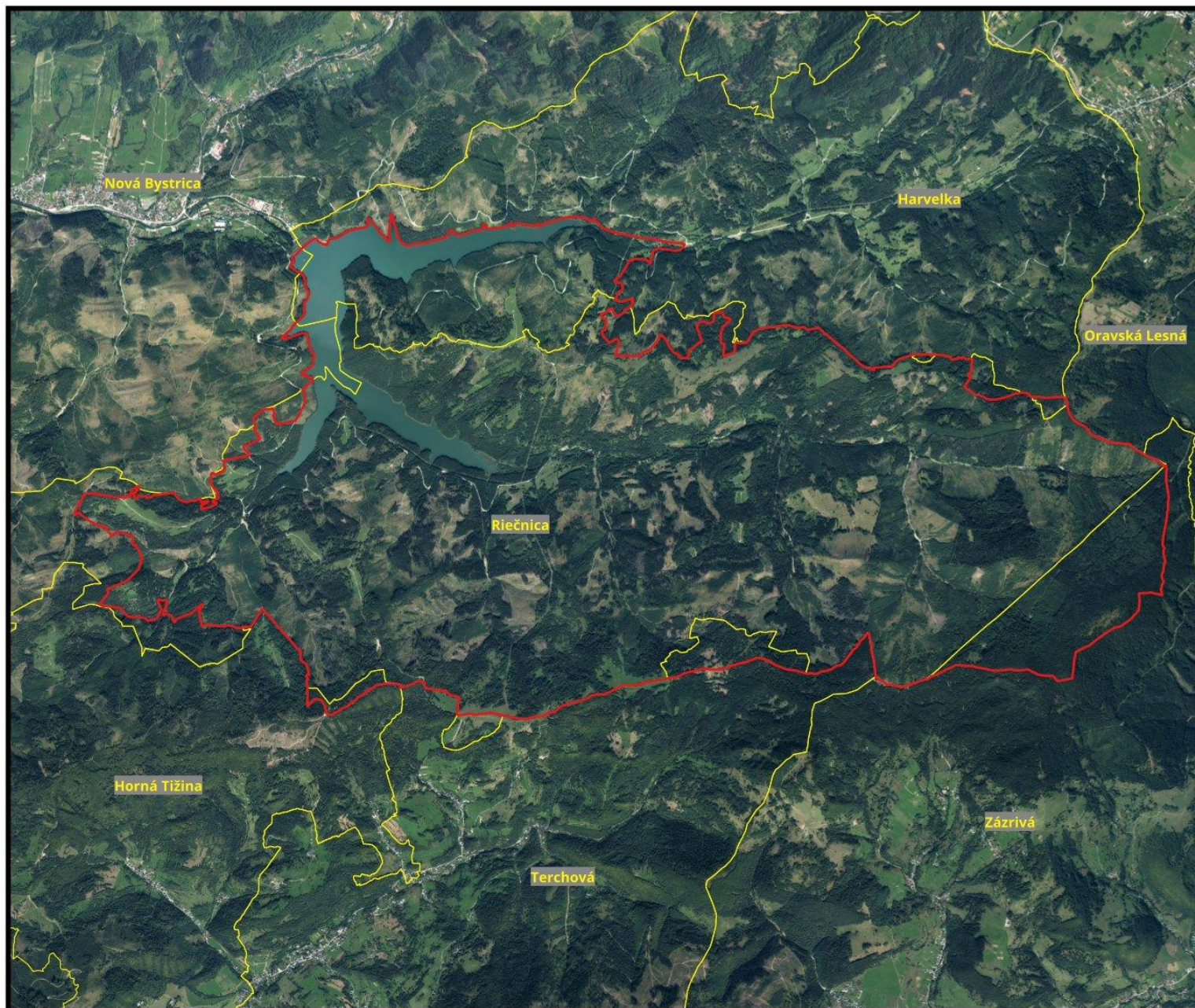


Legenda



-  Hranice lokality [1]
-  Hranice KÚ



## 7b. SKUEV0288 Kysucké Beskydy, východná časť



### Legenda

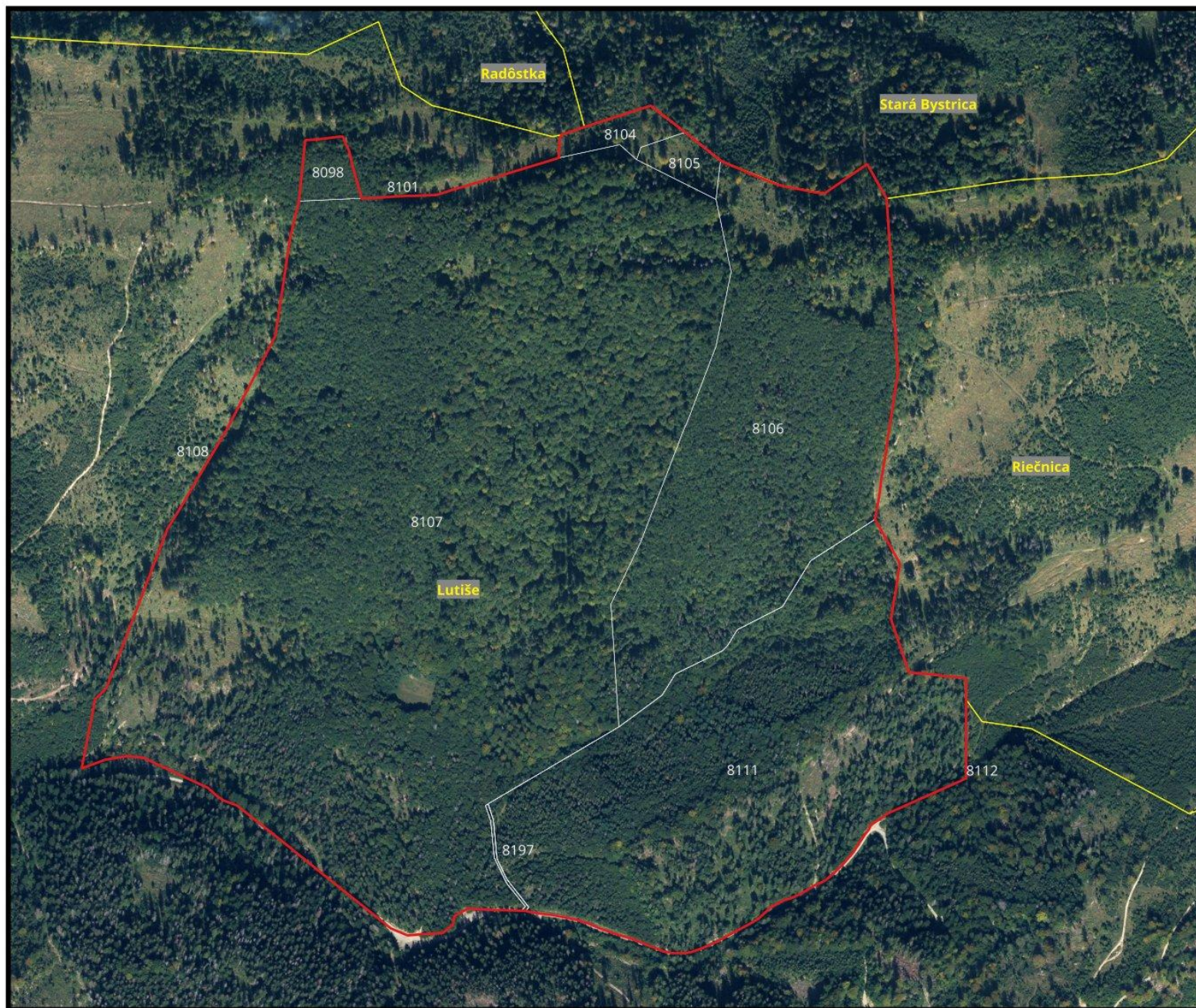
-  Hranice lokality [2]
-  Hranice KÚ



0 800 1 600 m

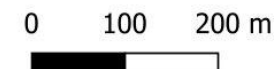


## 7c. SKUEV0288 Kysucké Beskydy, časť Čierna Lutiša



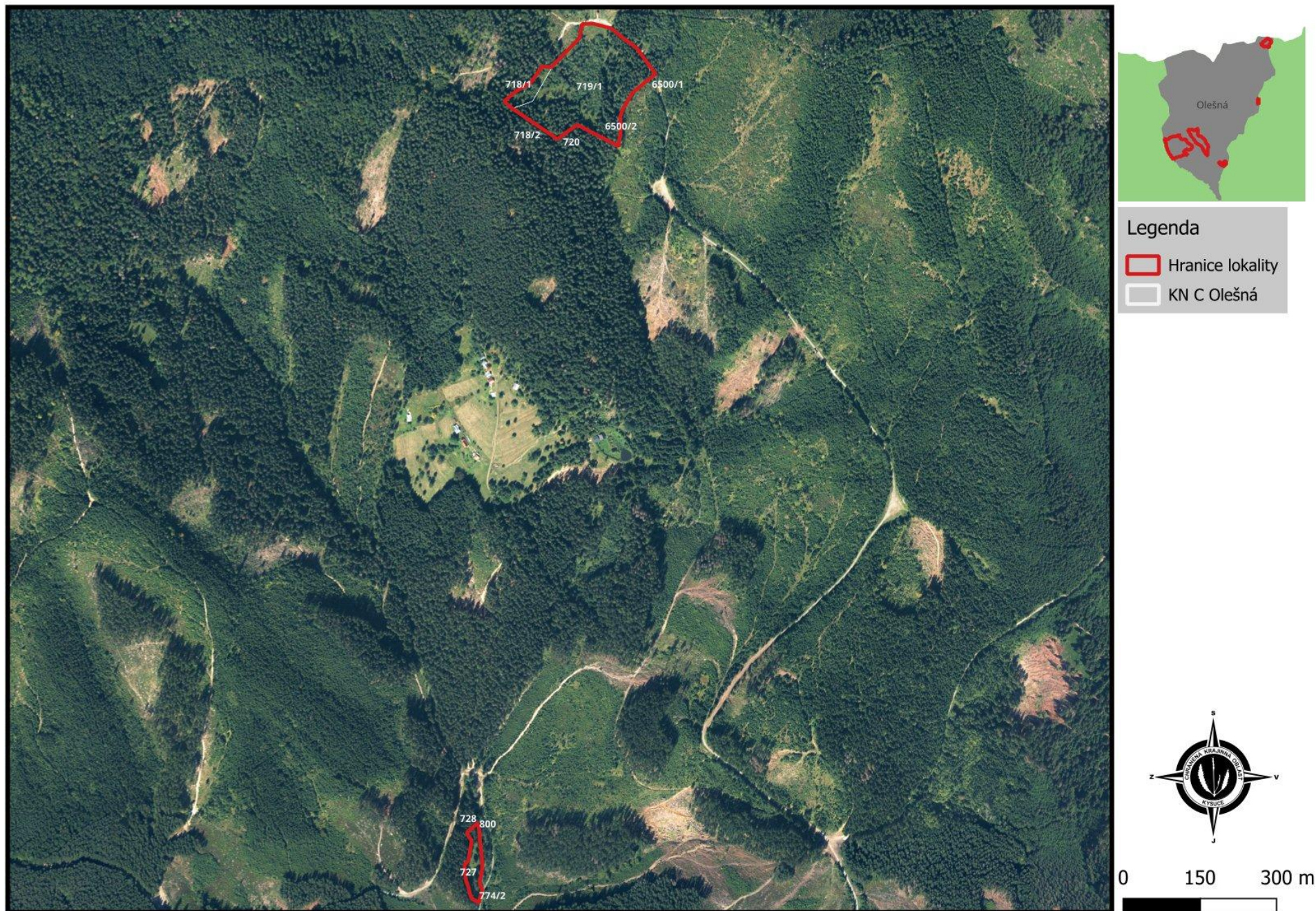
### Legenda

- Hranice lokality [3]
- KN C Lutiše
- Hranice KÚ

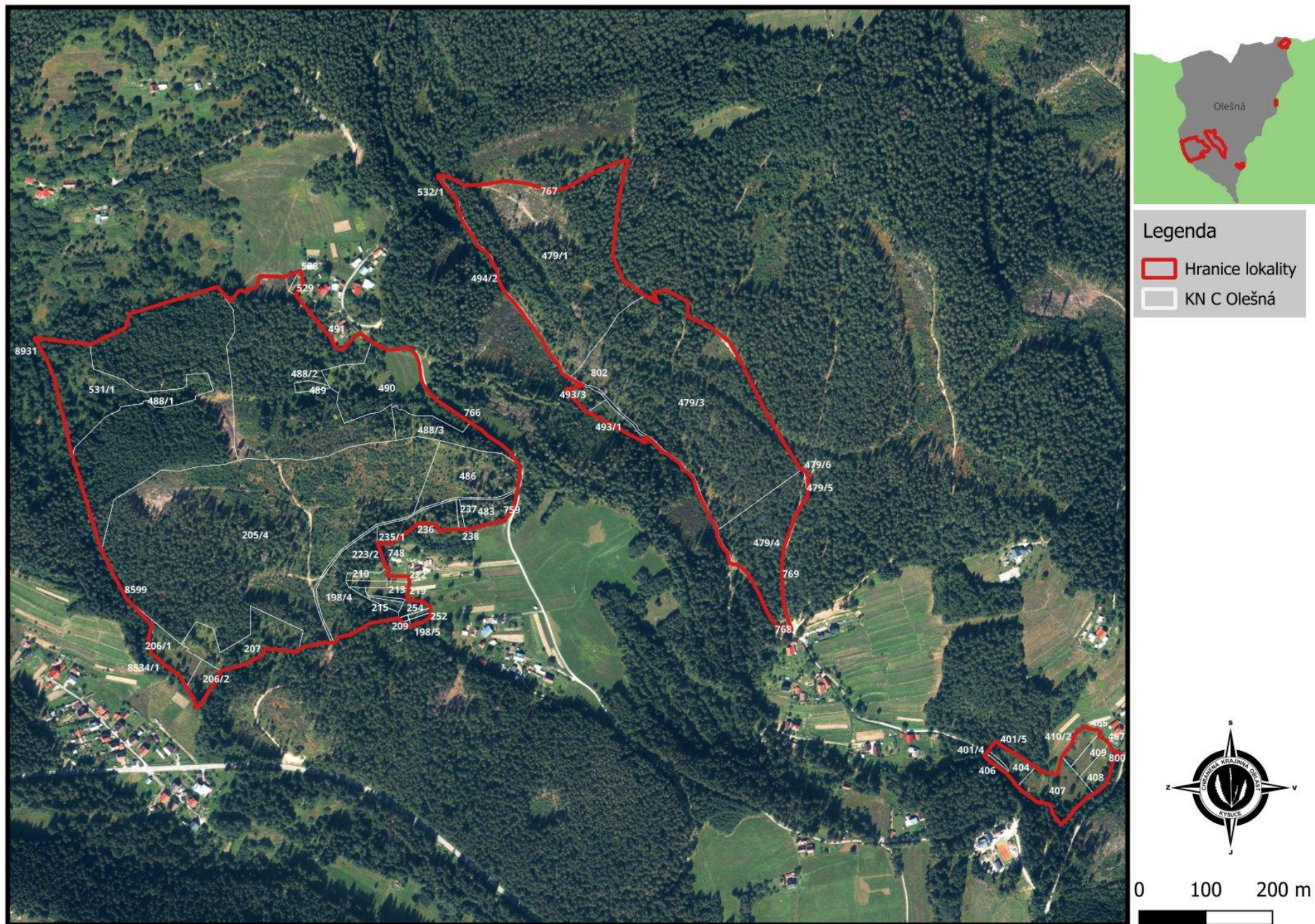




## 9a. SKUEV0671 Olešnianske rašeliniská – severná časť



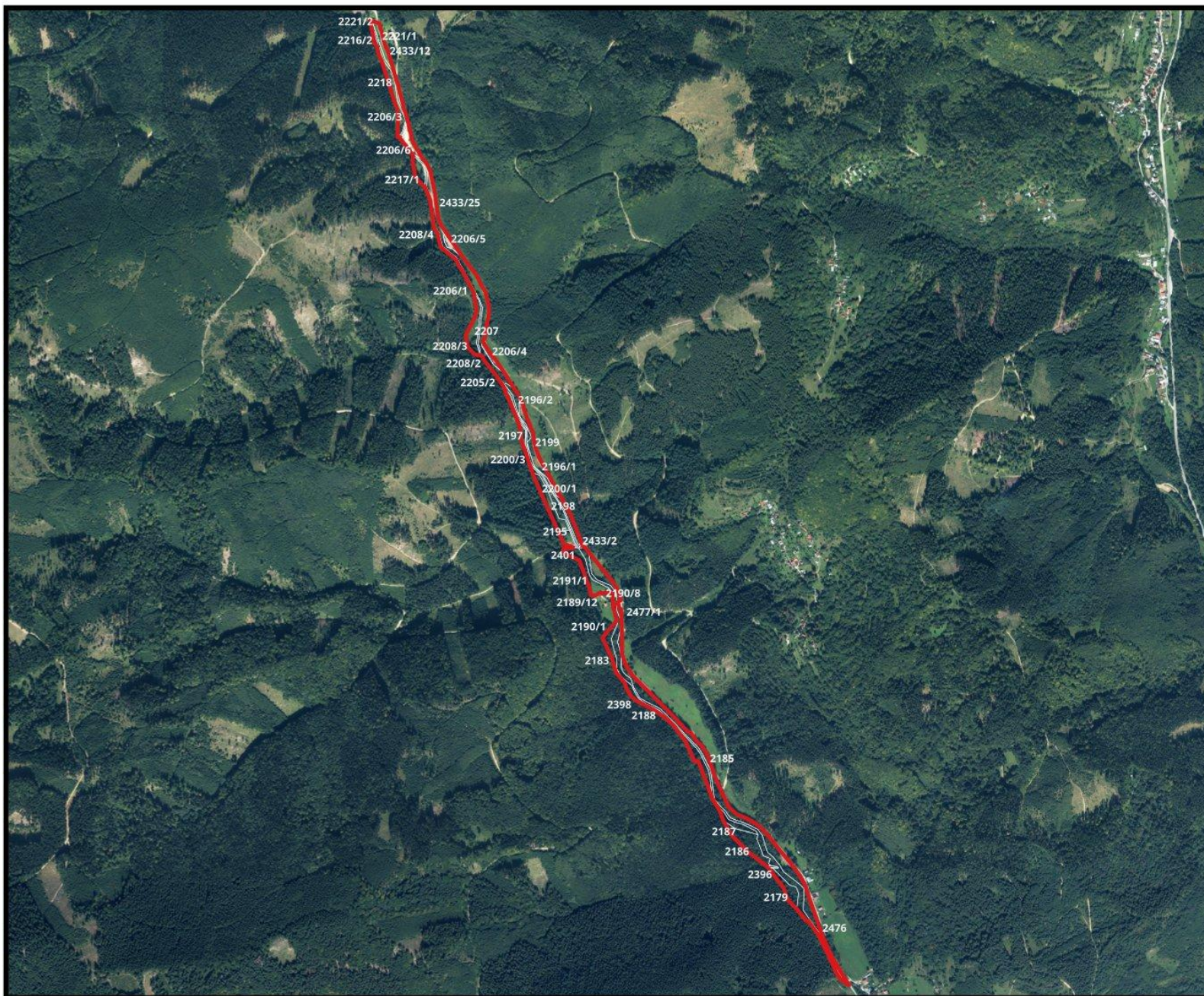
## 9b. SKUEV671 Olešnianske rašeliniská – južná časť



## 10. SKUEV0641 Papradnianka

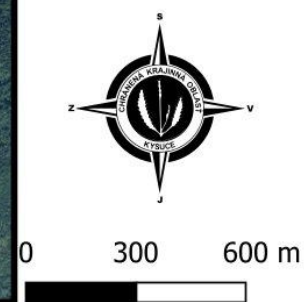


# 11. SKUEV0644 Petrovička

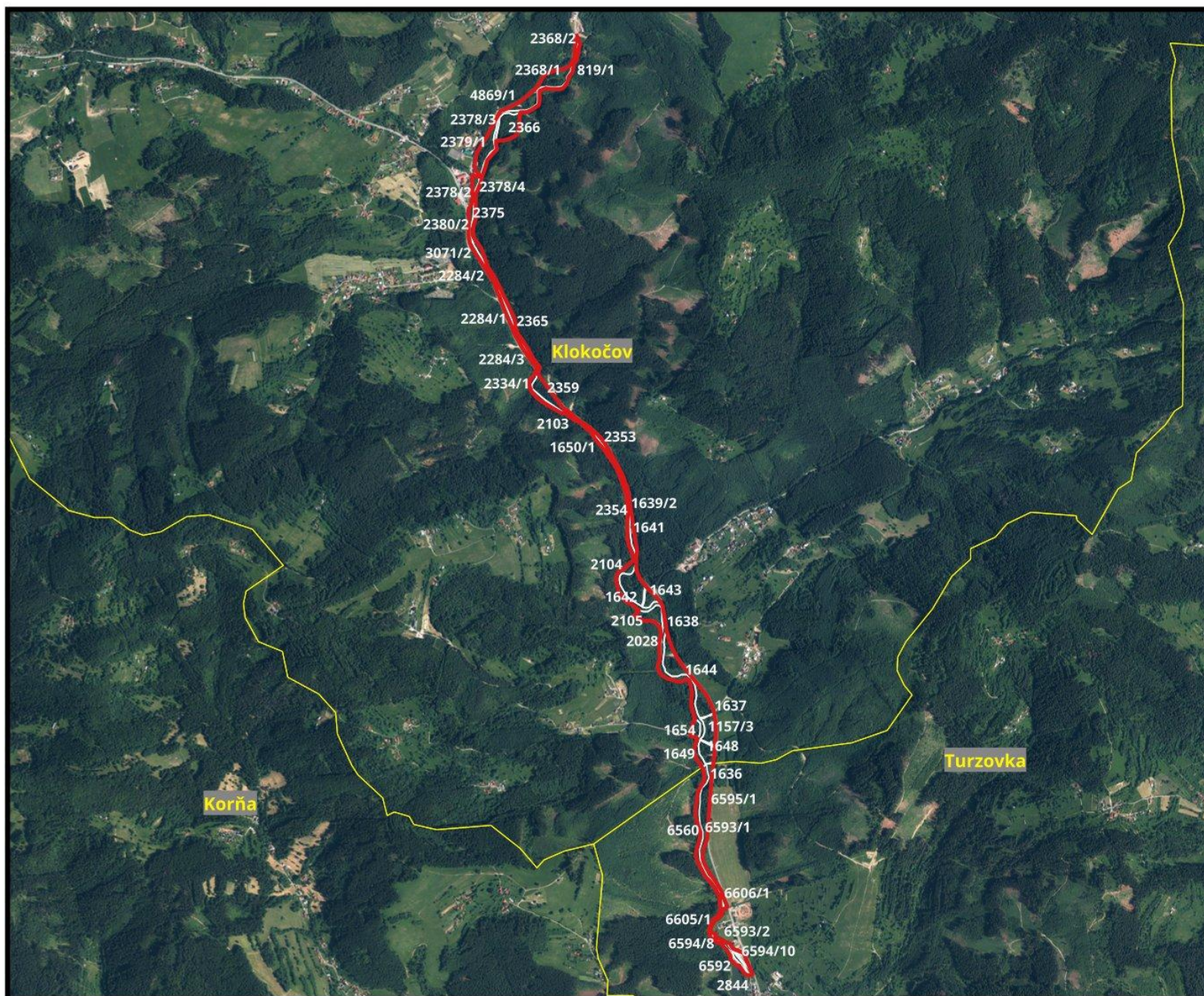


**Legenda**

-  Hranice lokality
-  KN C Petrovice



## 12. SKUEV0655 Predmieranka



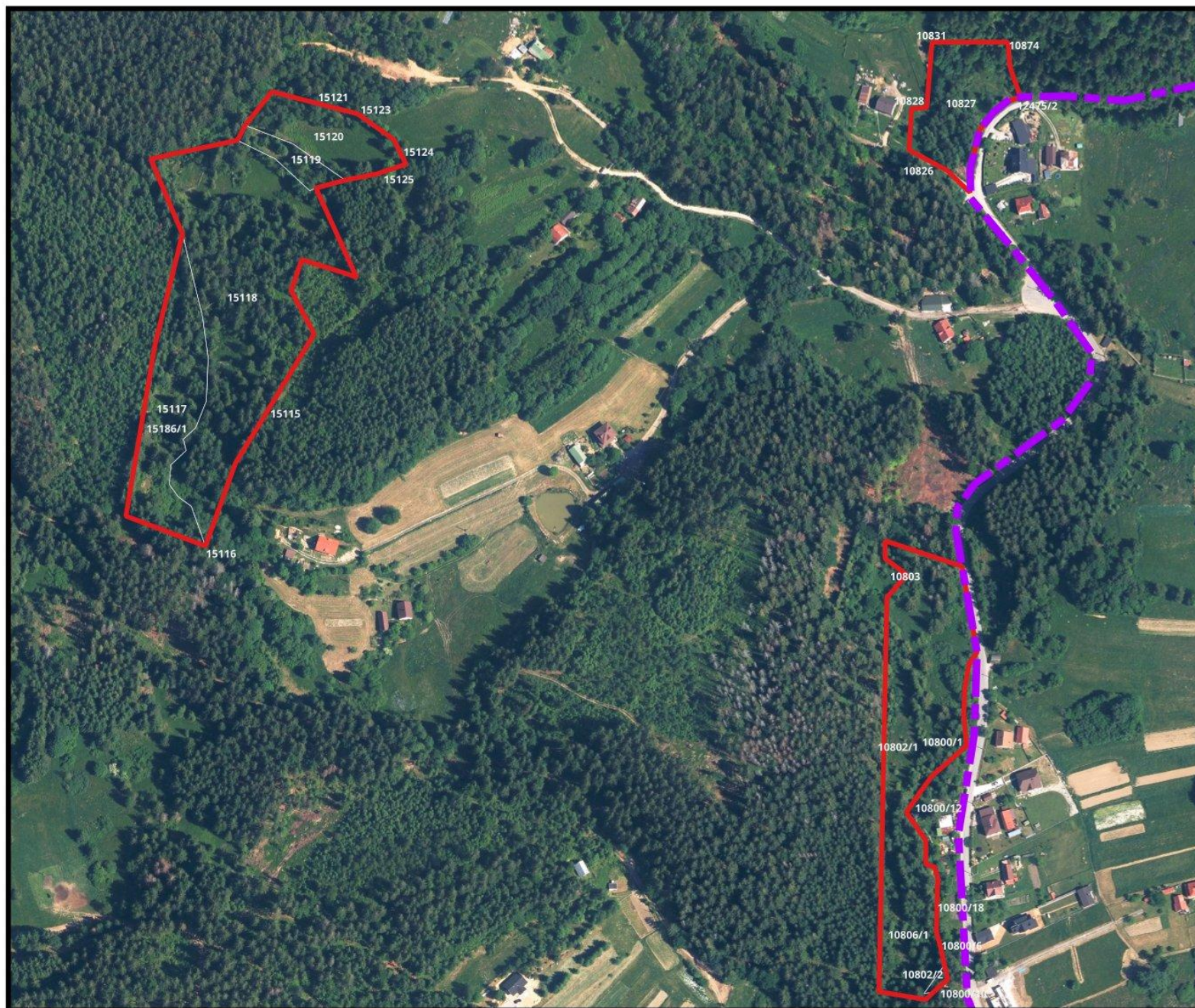
### Legenda

- Hranice lokality
- KN C Klokočov  
KN C Turzovka
- Hranice KÚ



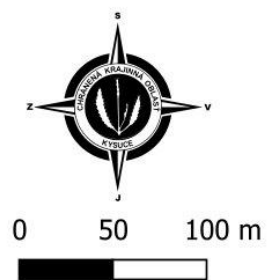


# 14a. SKUEV838 Rakovsko-milošovské rašeliniská – západná časť

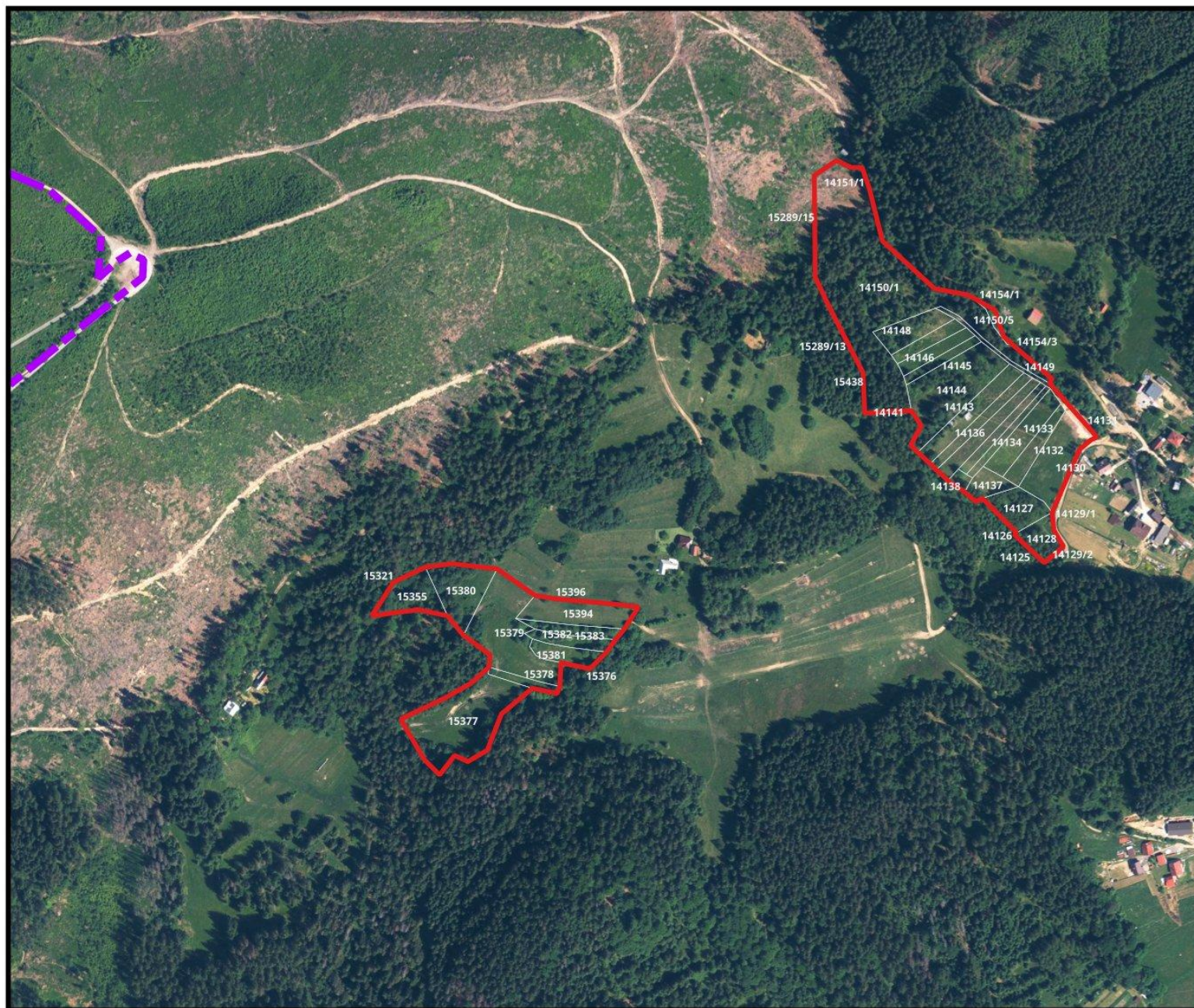


**Legenda**

- KN C Čadca
- KN C Raková
- Hranice lokality [1]
- Hranice CHKO Kysuce

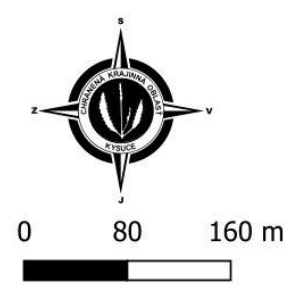


# 14b. SKUEV838 Rakovsko-milošovské rašeliniská – východná časť

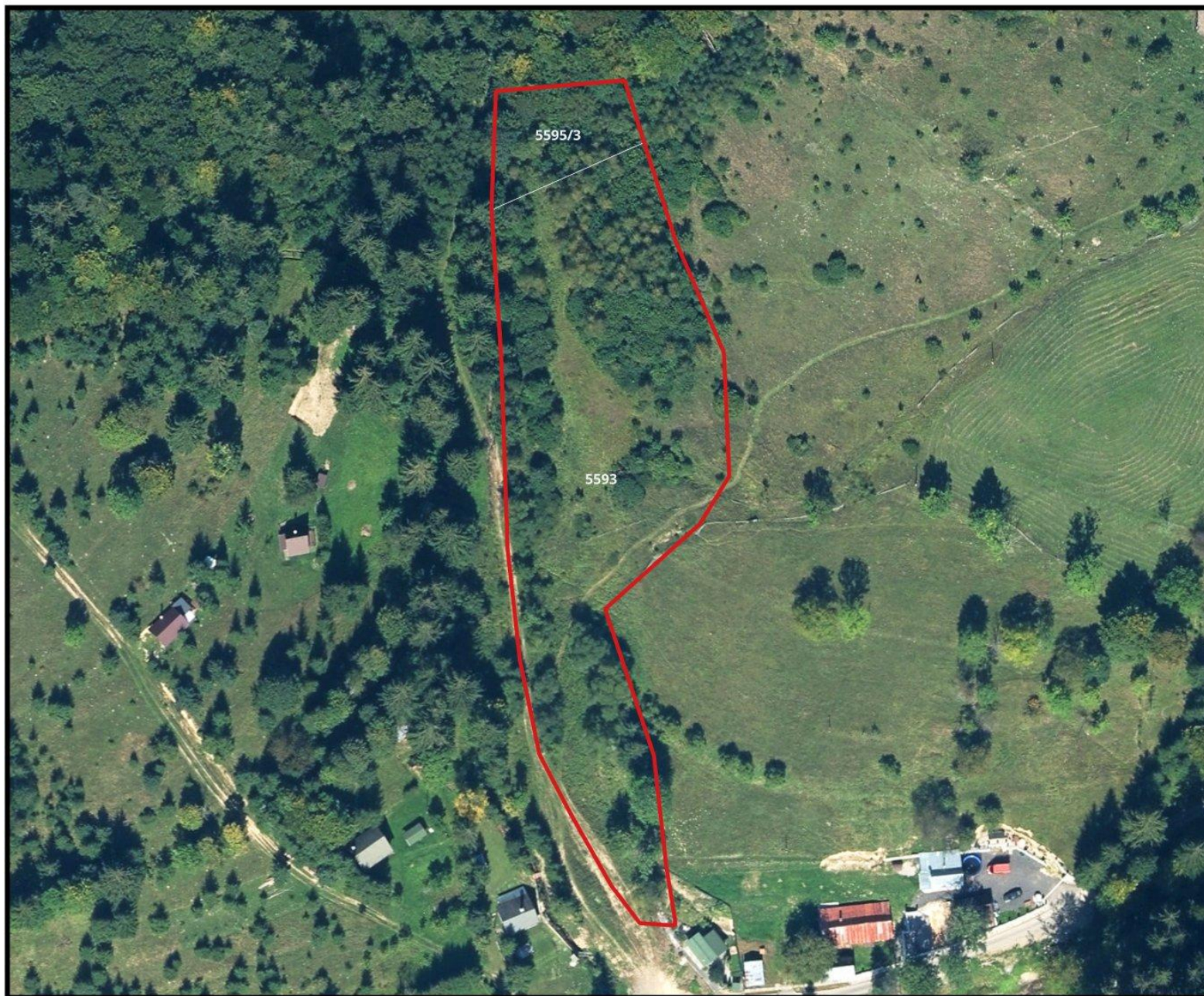


**Legenda**

- KN C Čadca
- KN C Raková
- ▭ Hranice lokality [1]
- ▭ Hranice CHKO Kysuce



# 15. SKUEV0643 Ráztocké penovcové pramenisko

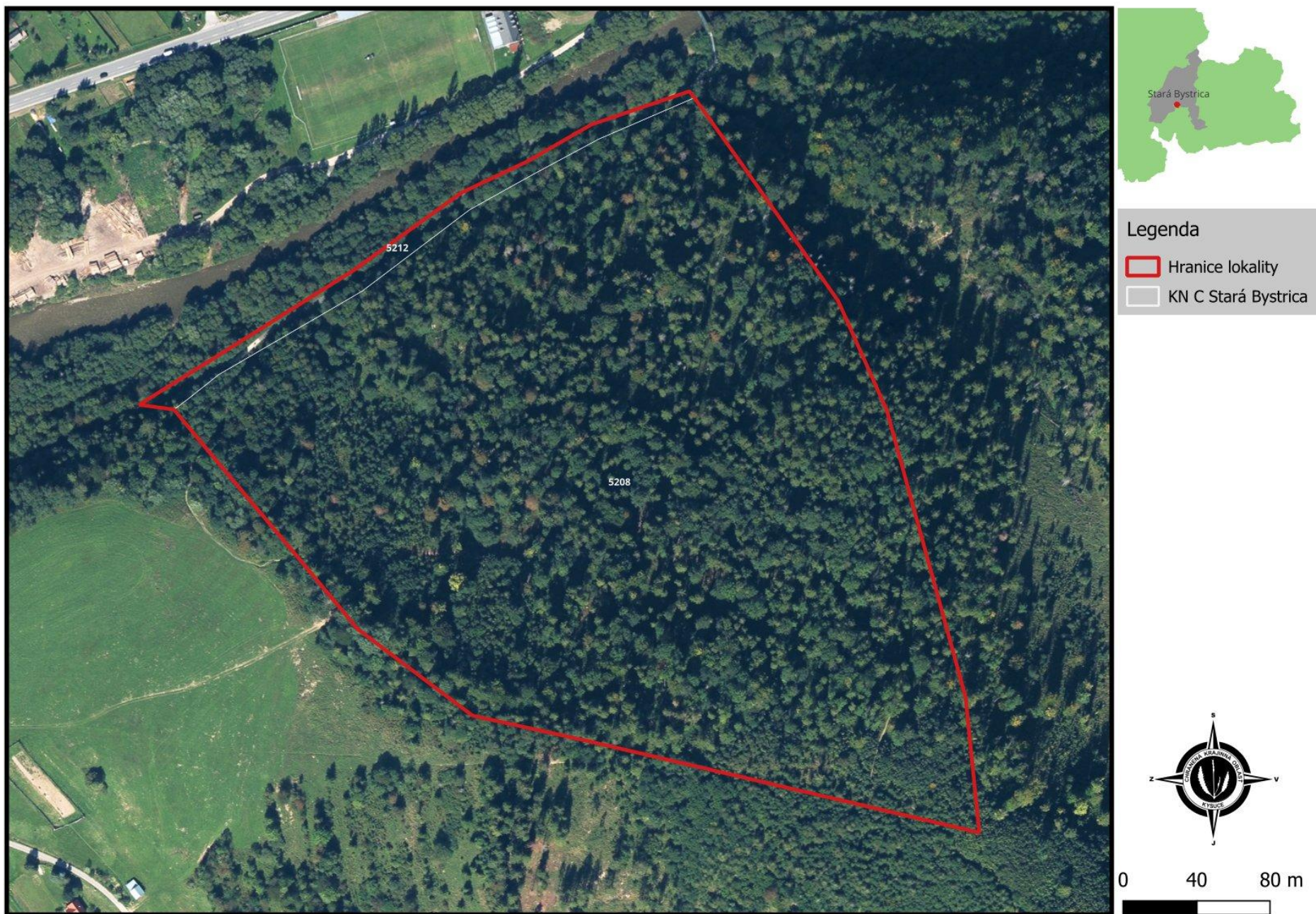


### Legenda

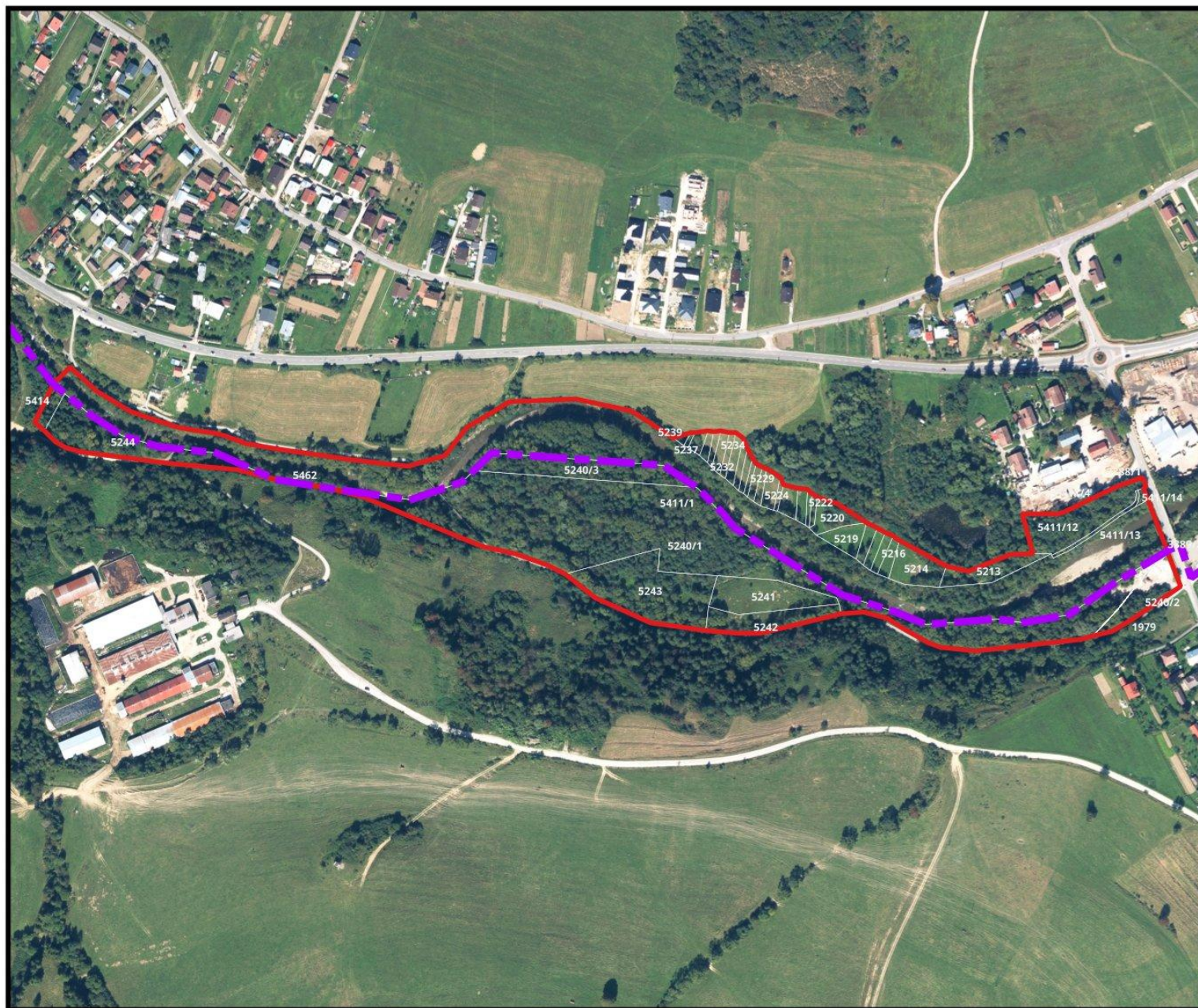
-  Hranice lokality
-  KN C Štiavnik



## 16. SKUEV0777 Starobystrické penovcové pramenisko



# 17. SKUEV0835 Stredný tok Bystrice



### Legenda

- KN C Stará Bystrica
- Hranice lokality
- Hranice CHKO Kysuce

